

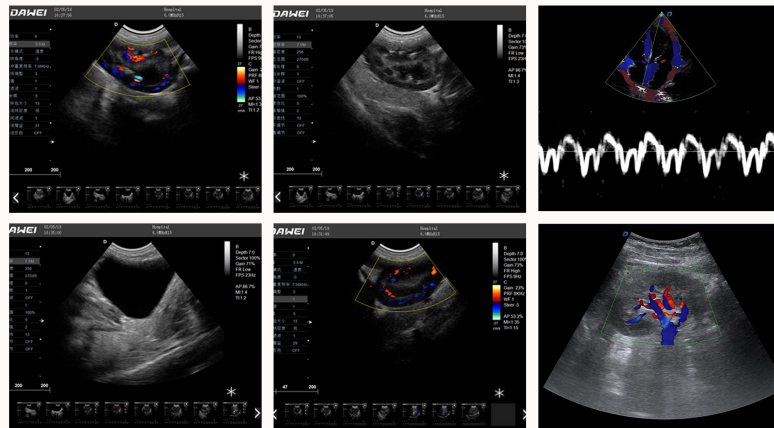


## HF-P6

### P6-vet portable animal B-ultrasound machine

## HF-P6

1. Based on the new technology platform, the safe and stable windows operating system, solid state storage data storage is faster, more stable and easy to cope with complex computing.
2. High performance, low power core processing chip, to ensure better image performance.
3. High brightness, high resolution 15 inch color medical LCD.
4. UI interface can be customized for various choices and customized clinical solutions belonging to you.
5. The multi-purpose user presets, comprehensive measurement & report system, built-in image achieve system, quick image storage / retrieve / transfer, one-button direct print.



### Product Parameters

- 15 inch medical LED display with articulating arm for viewing from any angle
- Ergonomic keyboard design, Elegant operation panel, optimized keyboard according to operation frequency and functional zone, and adjustable
- Probe Ports: 2 Active, free probe switching, hot-swapping available
- Continuously working 2-3 hours: Large capacity plug-gable mobile rechargeable lithium-ion battery with imported high capacity battery
- Digital surround audio system
- Full patient database and image management solutions: DICOM 3.0, AVV, JPG, USB2.0, HDD, DVD, PDF report

